

Arthroscopy of the wrist joint: An important diagnostic tool

J. Pilný¹⁾, I. Čižmář²⁾

¹⁾ Department of Orthopedics, Regional Hospital, Pardubice
²⁾

Czech republic

Diagnostic Studies

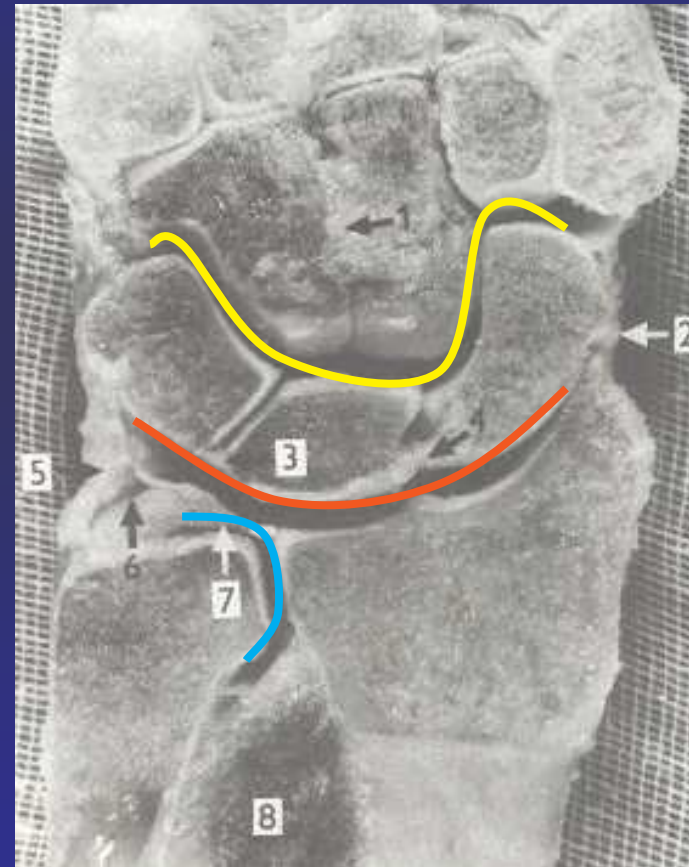
- Standard views (six radiographs)
- Radionuclide bone scans (screening tool)
- Arthrography (triple-phase injection)
- Computed tomography
- Magnetic resonance imaging
- Dynamic fluoroscopic imaging studies
- Arthroscopy (definitive diagnostic study)

Advantages of Arthroscopy

- Three-dimensional visual examination
- Possibility palpation
- Dynamic examination
- Stress examination
- Arthroscopic surgery

Anatomy

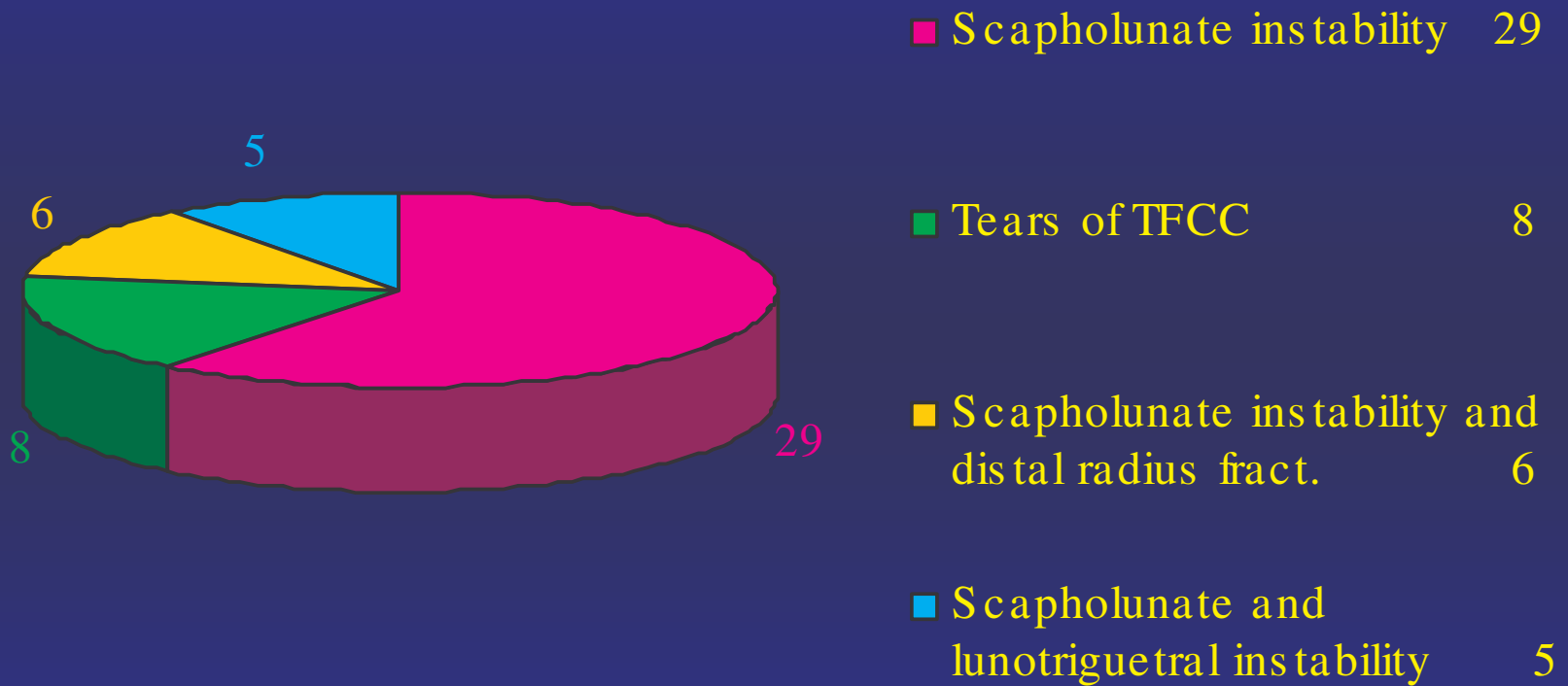
- Mediocarpal joint
- Radiocarpal joint
- Distal radioulnar joint



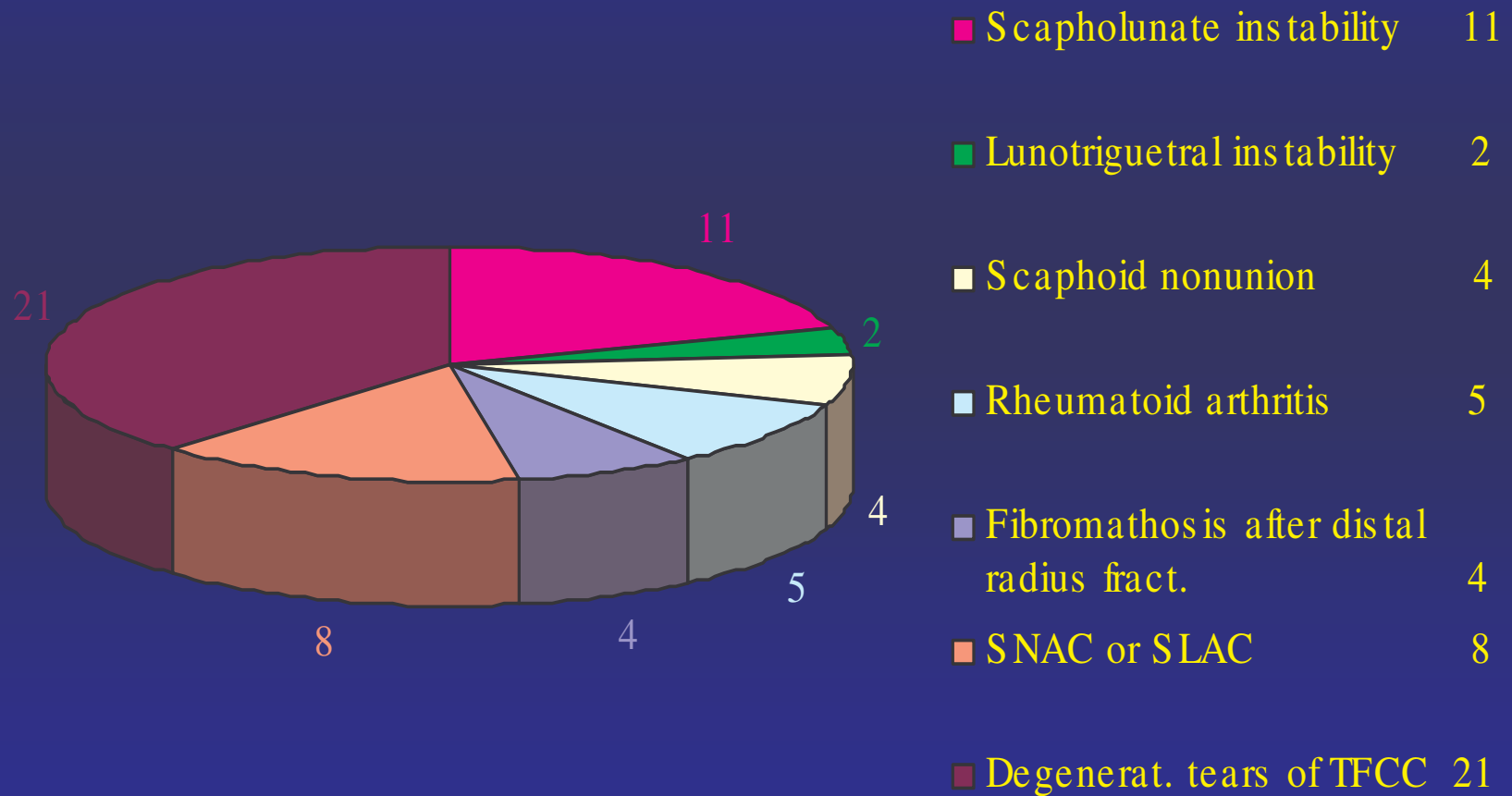
Characterization of collection

- Since January 2001 to March 2004
- 103 Arthroscopy of the wrist joint
- Age patients 14-64 years
- Female 45 Men 58
- Acute tears 48 Chronic tears 55

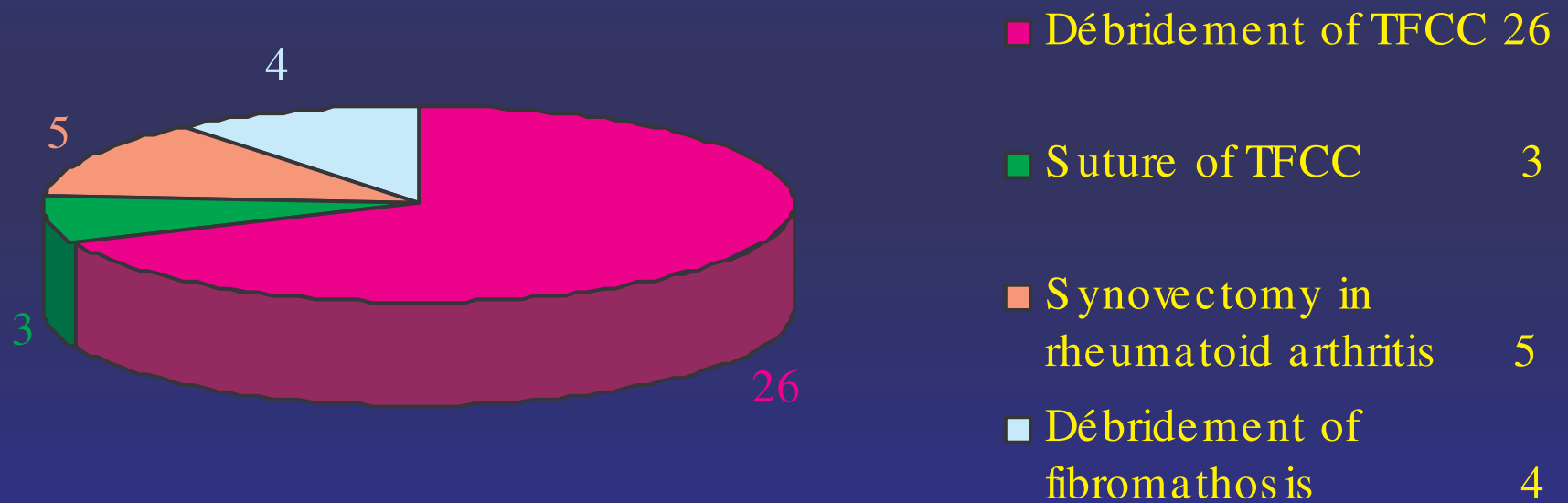
Arthroscopy of acute tears



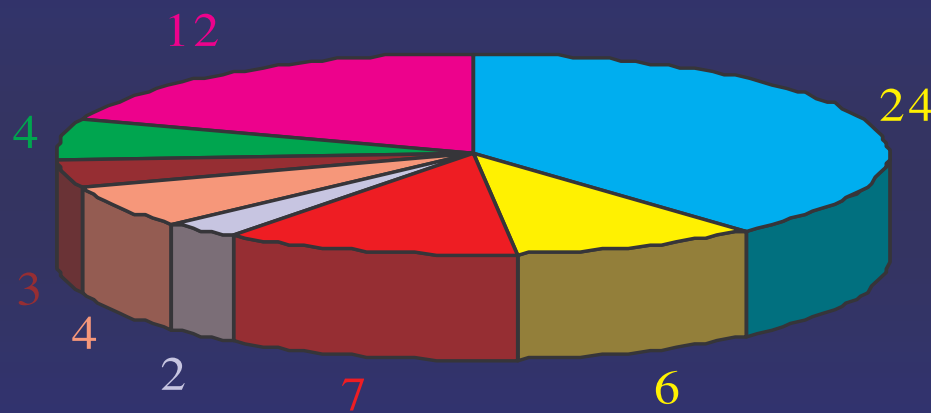
Arthroscopy of chronic tears



Arthroscopic operation



Consequential operation



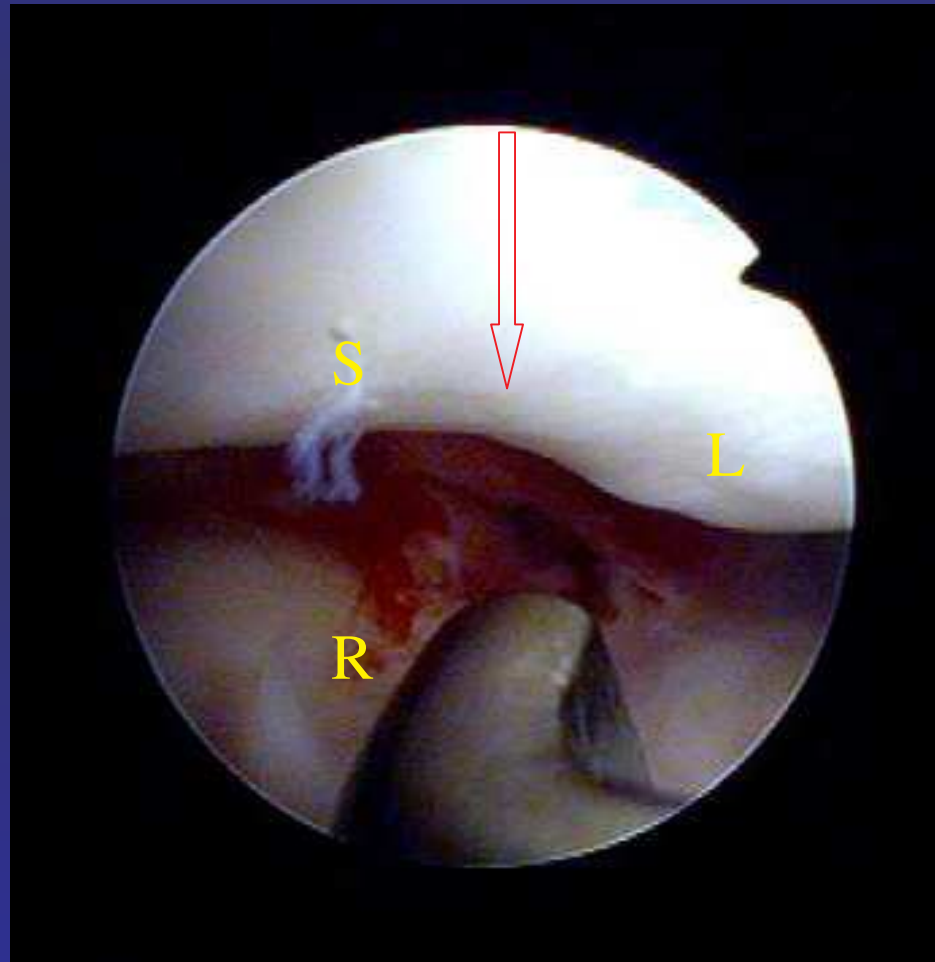
- Scapholunate ligament repair 24
- Capsulodesis 6
- Intercarpal arthrodesis 7
- Scapholunate ligament and Lunotriquetral repair 2
- Scaphoid nonunion treatment 4
- Proximal row carpectomy 3
- Corrective osteotomy of distal radius 4
- Ulnar recession osteotomy 12

Arthroscopic images



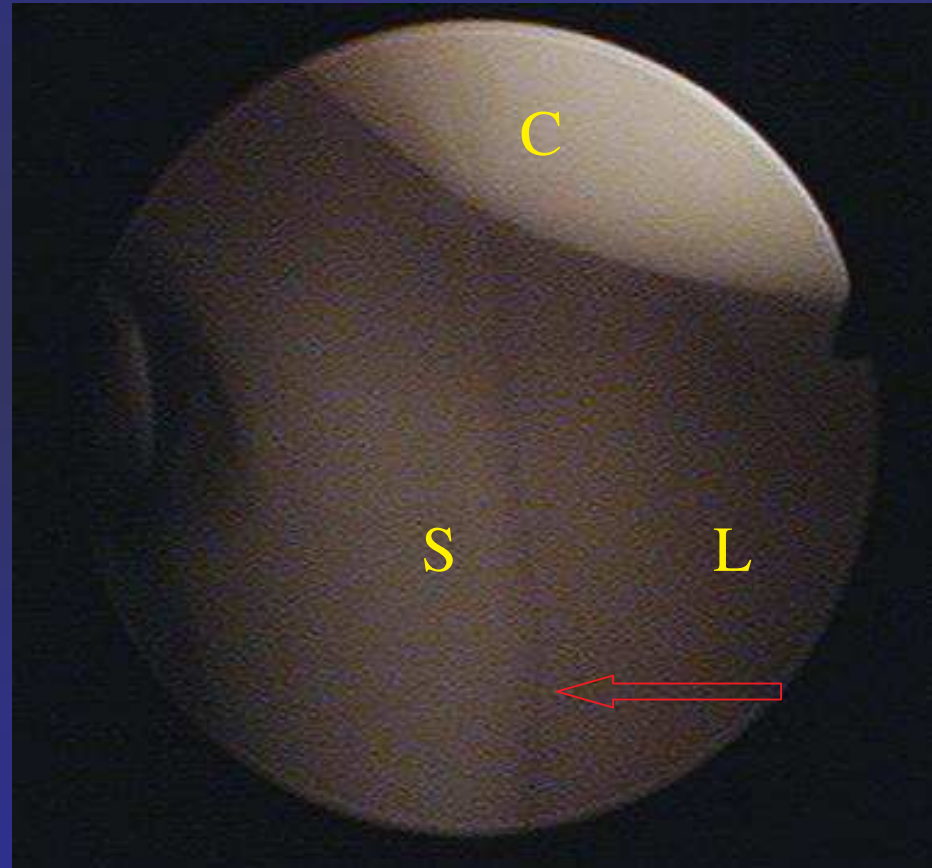
Scapholunate ligament

(from RC joint)



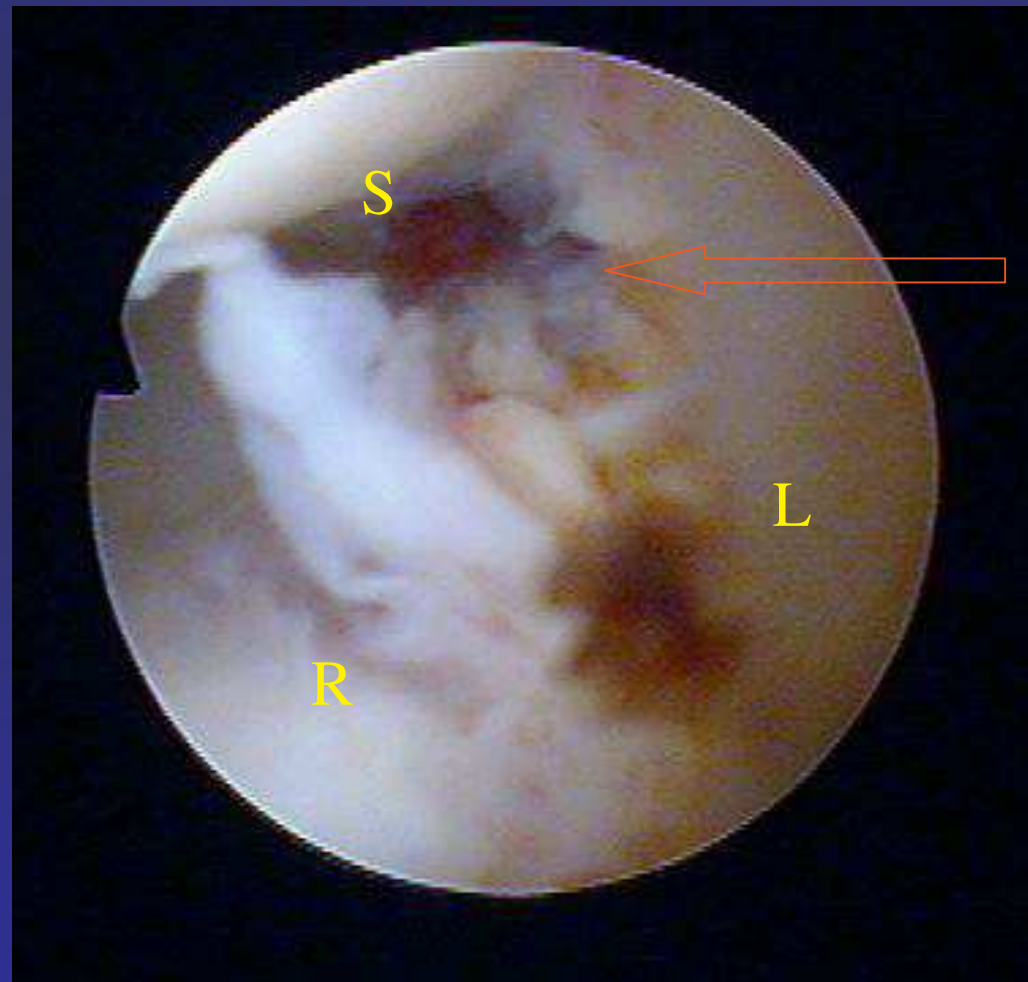
Scapholunate joint

(from MC joint)



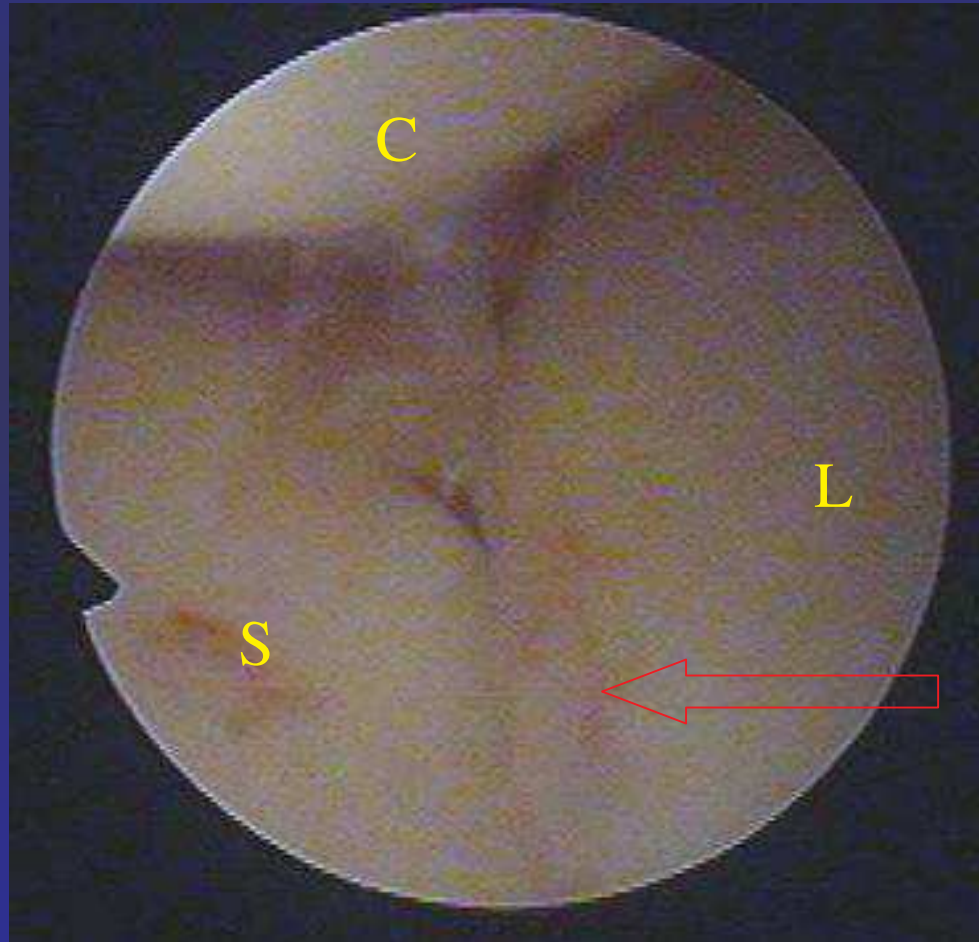
Acute scapholunate dissociation

(from RC joint)



Acute scapholunate dissociation

(from MC joint)



Treatment of acute scapholunate dissociation



Chronic scapholunate dissociation

(from RC joint)



Chronic scapholunate dissociation

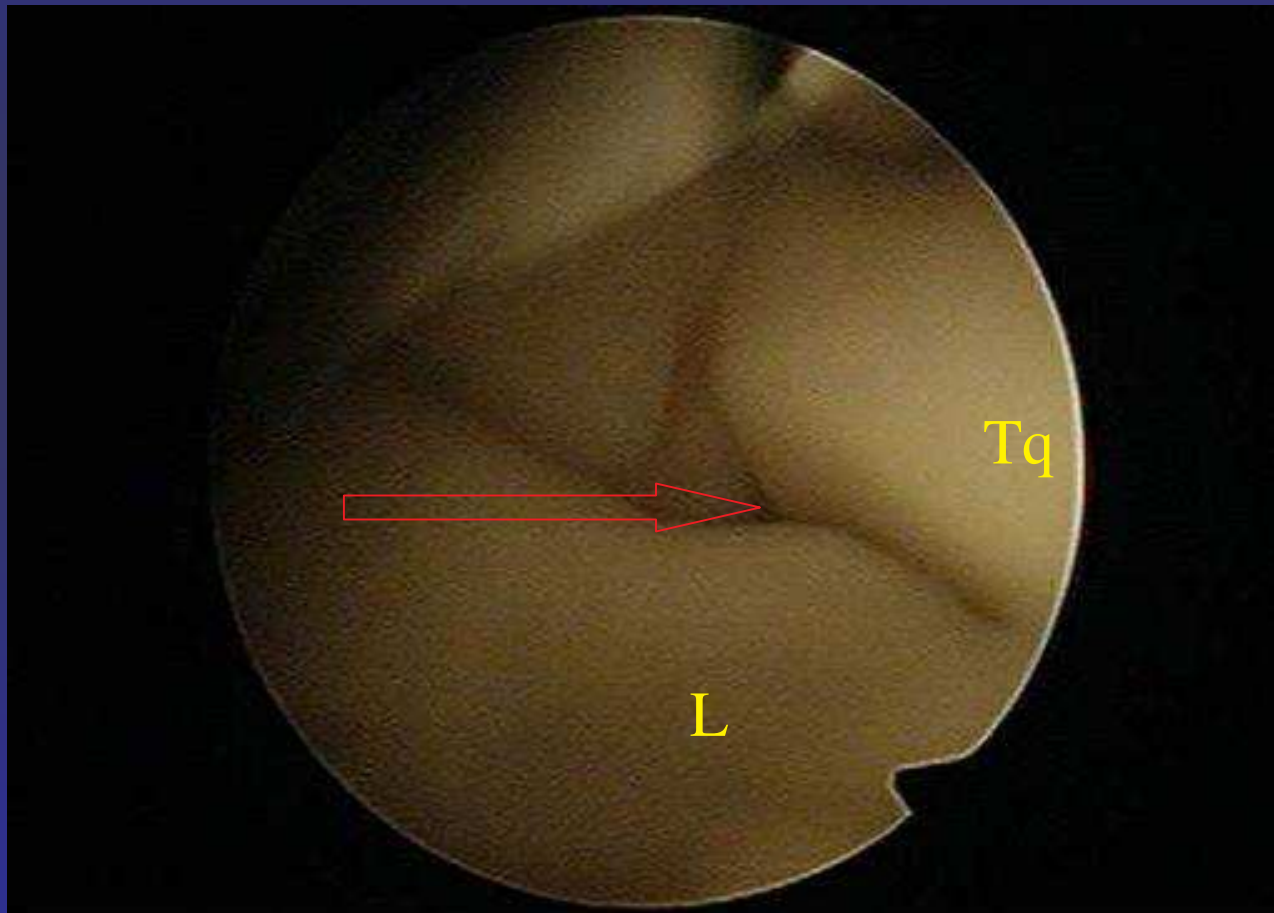
(from MC joint)



Treatment of chronic scapholunate dissociation

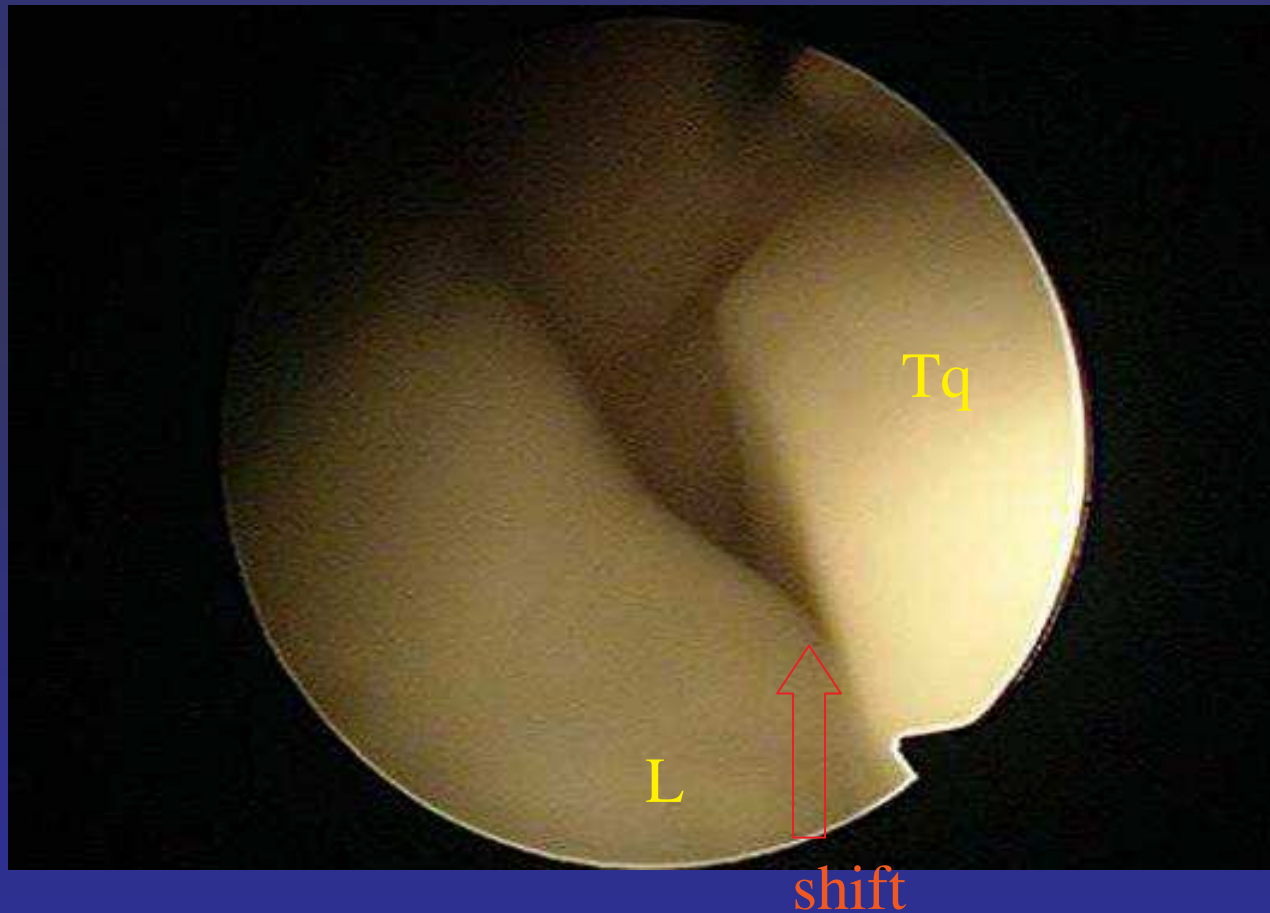
Lunotriquetral joint

(from MC joint)



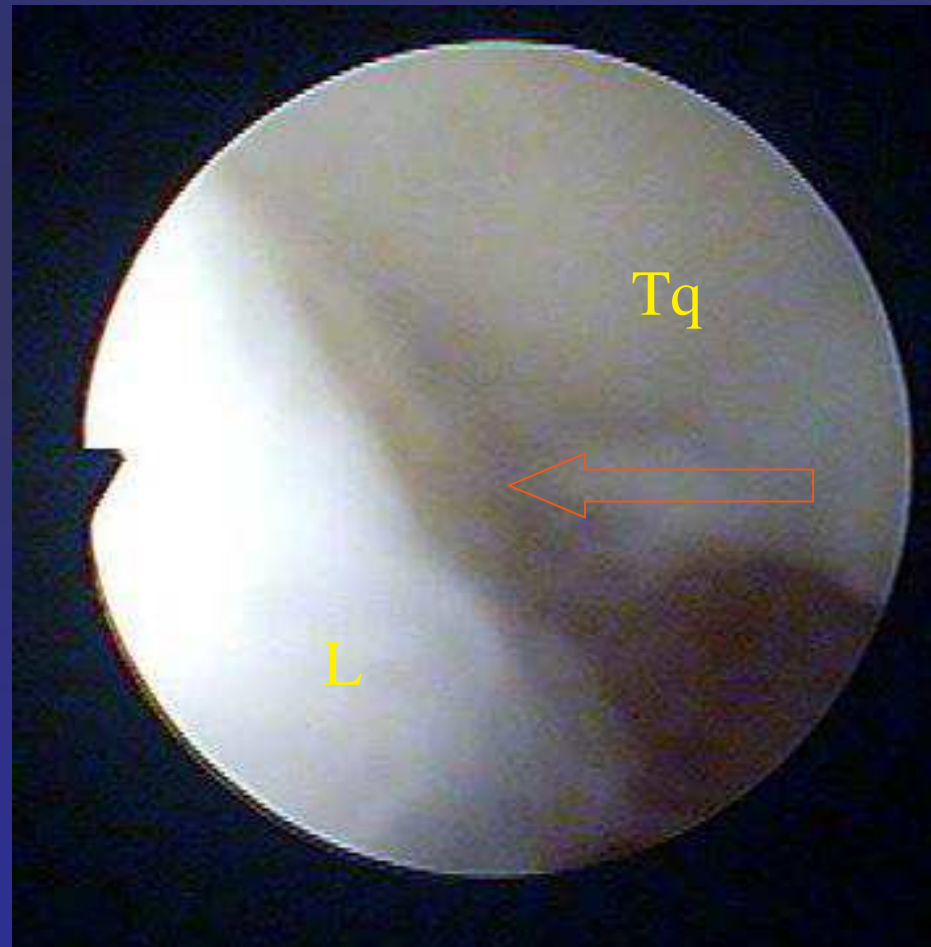
Chronic lunotriquetral dissociation

(from MC joint)



Chronic lunotriquetral dissociation

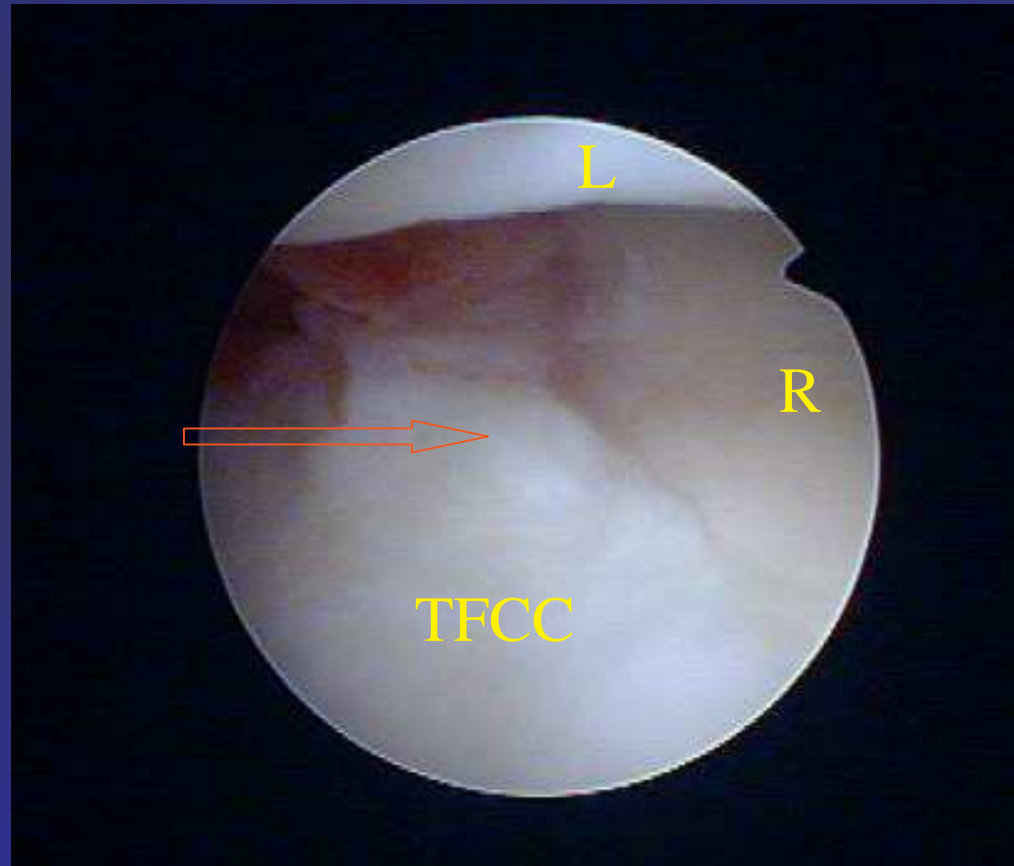
(from RC joint)



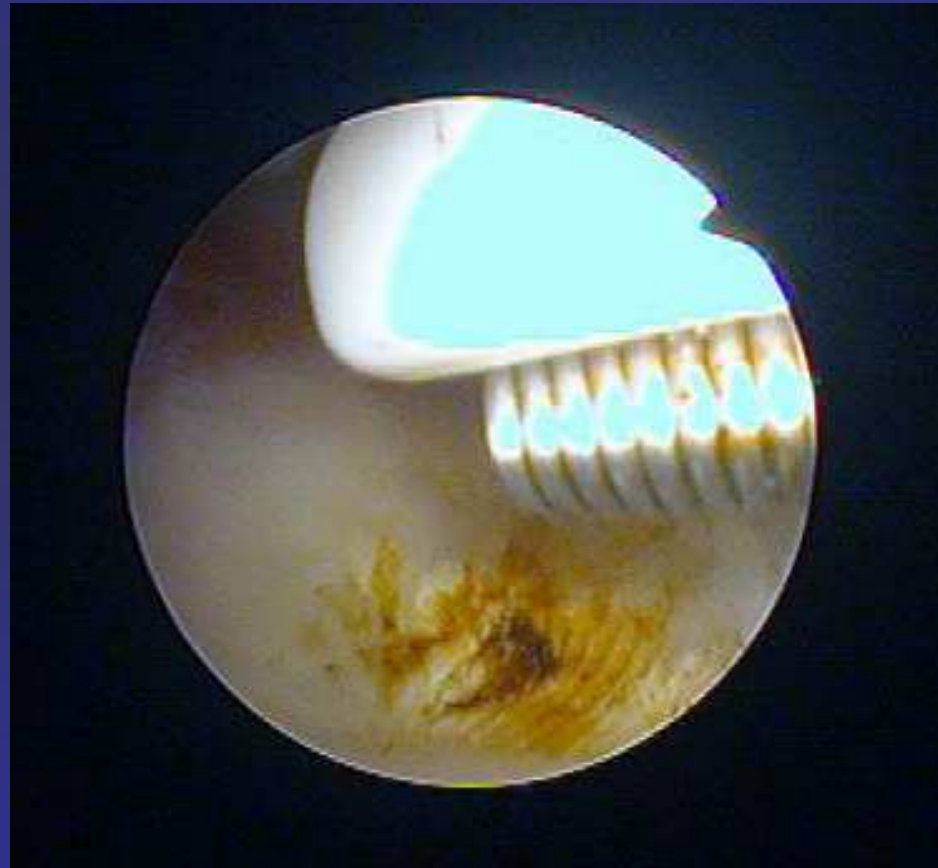
Treatment of chronic lunotriquetral dissociation



Acute tear of TFCC

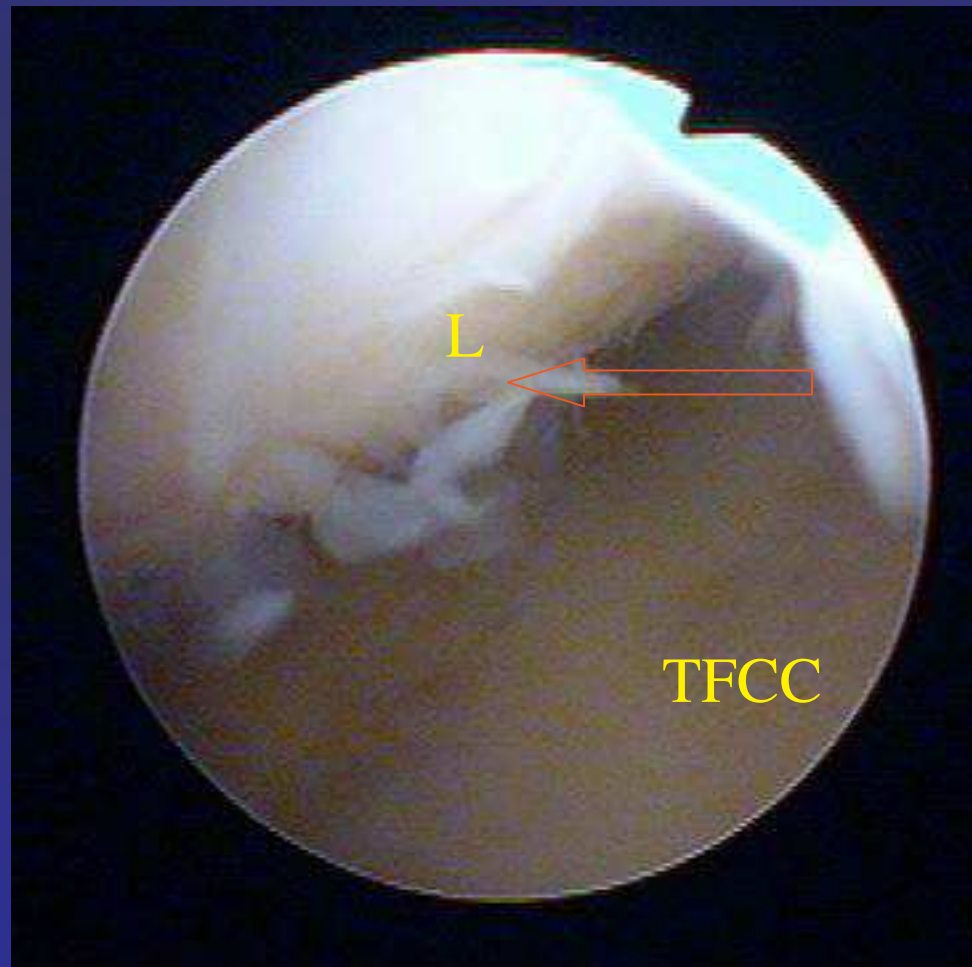


Resection of acute tear of TFCC



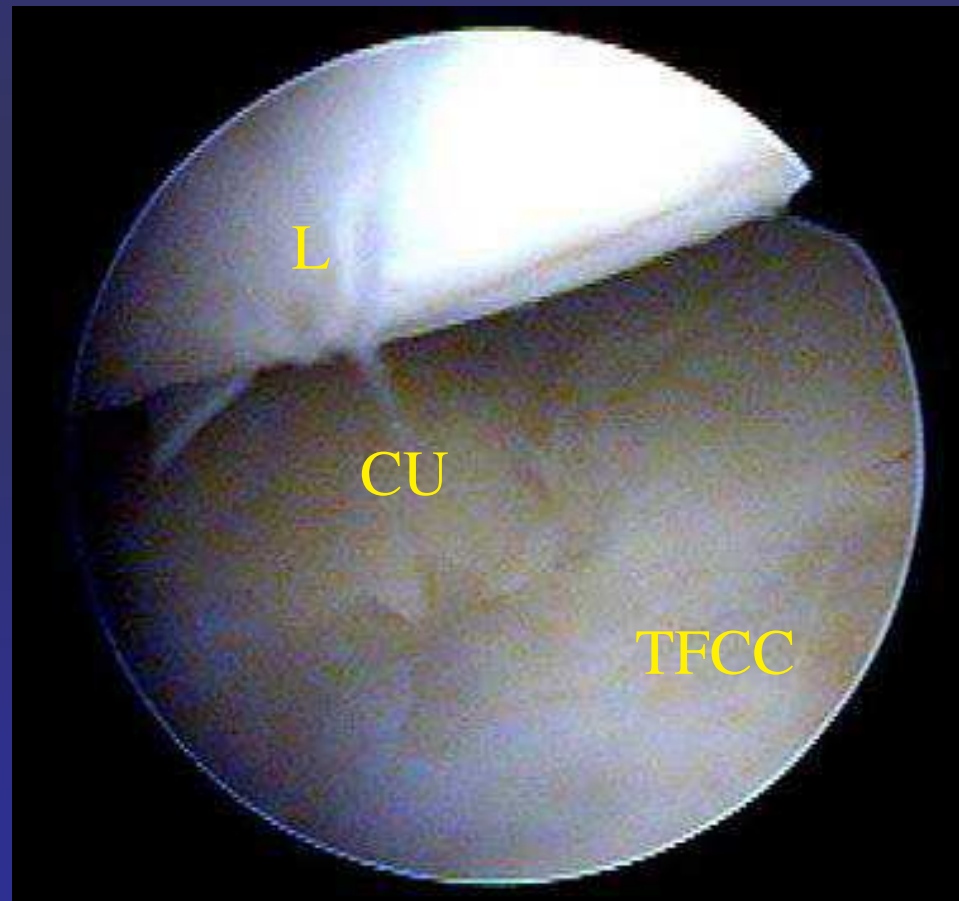
Chronic tear of TFCC

(Palmer II.B)



Chronic tear of TFCC

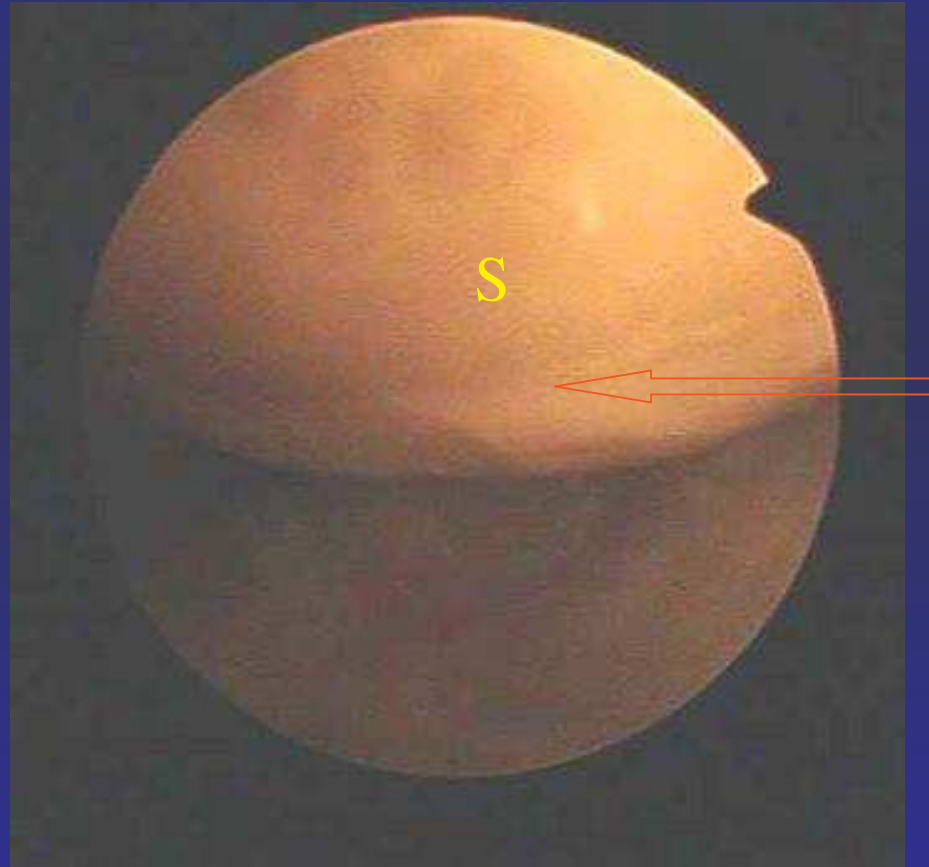
(Palmer II.C)



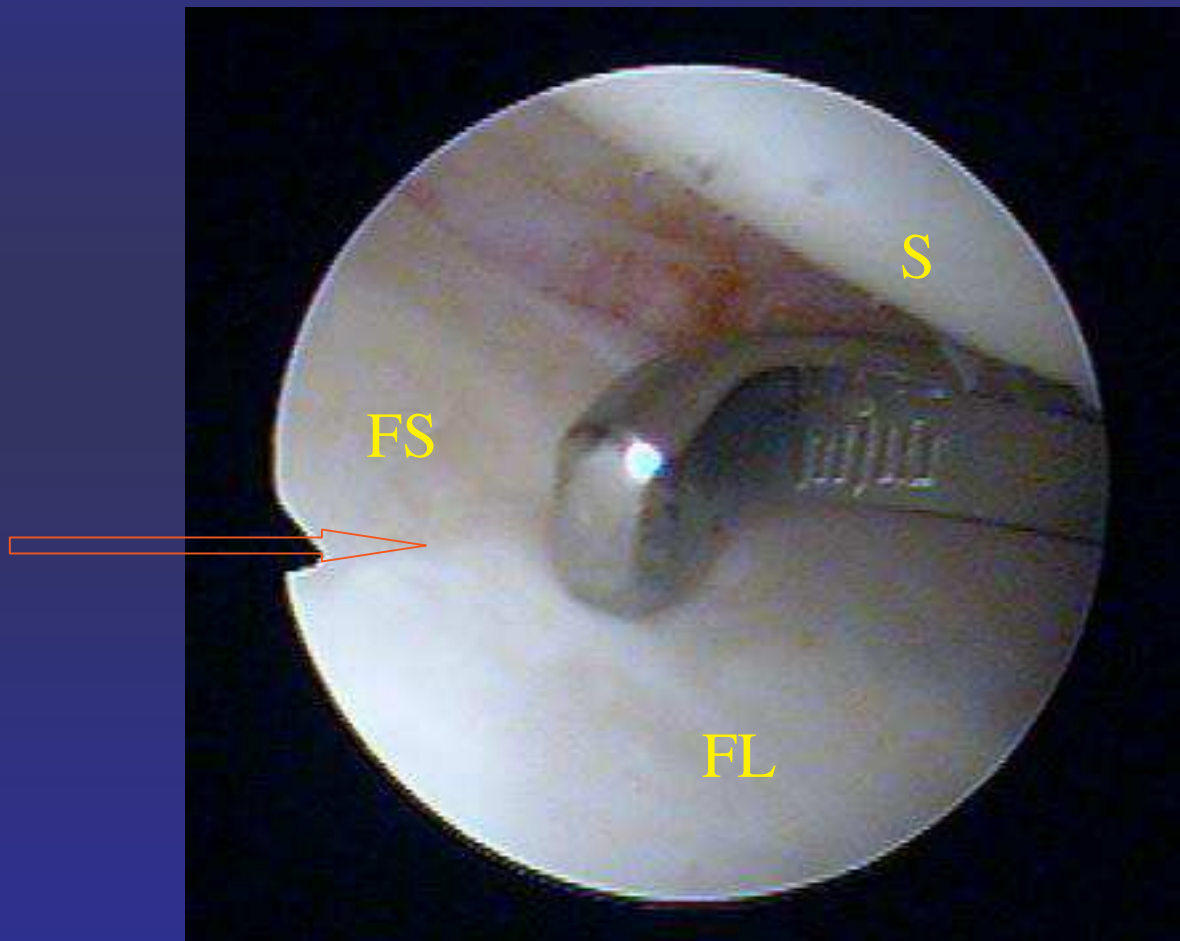
Treatment of chronic tear of TFCC (ulnocarpal abutment)



Post-traumatic Arthrosis of the Wrist SLAC (stage I.)



Post-traumatic Arthrosis of the Wrist SLAC (stage II.)



Treatment of post-traumatic Arthrosis of the Wrist (PRC)



A photograph of a snowy night scene. In the background, a church with a white facade and a tall steeple is illuminated by warm lights. The foreground is a snow-covered path lined with low hedges and trees, also lit by warm, glowing lights. The overall atmosphere is cozy and serene.

Thank you !